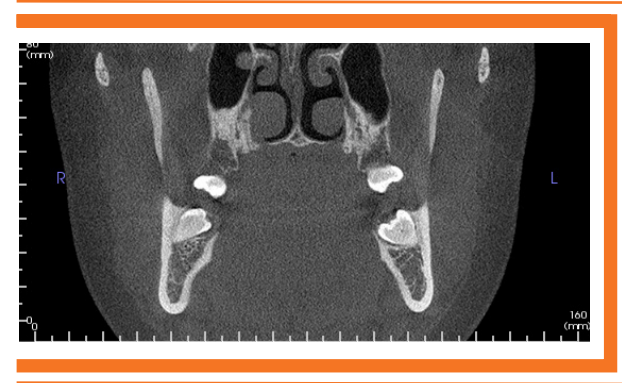
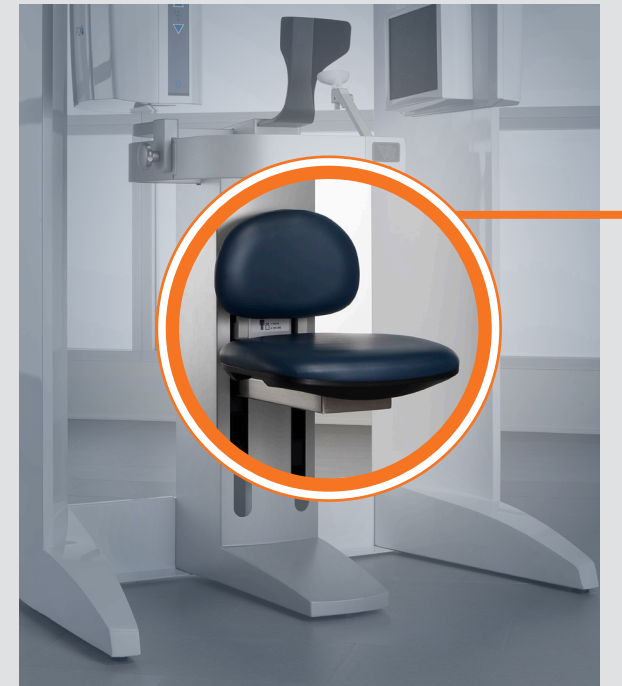


## THE i-CAT STORY



### OPEN PLATFORM

i-CAT FLX allows for an open platform when using your DICOM files. These files are not 'locked' giving you the freedom to use i-CAT-captured files in a wide array of programs including CAD/CAM applications and other dental equipment.



### SEATED POSITION

i-CAT FLX is one of the few machines that provide a seated position for scanning. Ergonomic Stability System (ESS) allows for easy, seated patient positioning, designed to minimize patient movement and avoid unnecessary retakes and additional radiation.



### DEDICATED 2D PAN

Capture traditional 2D panoramic images with the i-PAN™ feature when 3D diagnostic information is not required.

## THE i-CAT Story

ENVISION A FUTURE OF FREEDOM

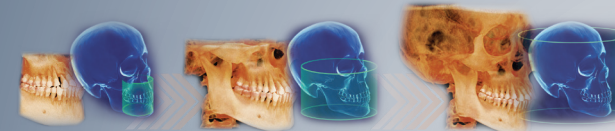


i-CAT™ FLX  
V - S E R I E S



UPGRADEABLE

### FLEXIBLE FUTURE

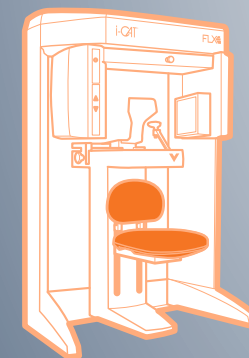


LOW DOSE

3D IMAGES AT A RADIATION DOSE COMPARABLE TO A 2D PANORAMIC IMAGE\*

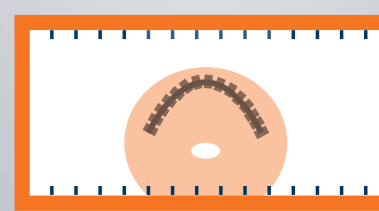


SEATED POSITION



MOTION PREVENTION

OPEN PLATFORM



DICOM SHARING

NO OFFSET SCANNING



STITCHING NOT REQUIRED<sup>o</sup>

i-CAT™ www.i-CAT.com | DEXIS 1-888-88-DEXIS

\* Utilizing the i-CAT FLX QuickScan+ exposure protocol. Use of lower dosage imaging may only be suitable for certain diagnostic tasks. Image quality is proportional to dose. i-CAT FLX offers a variety of exposure protocols allowing clinicians to adjust dosage to specific diagnostic needs.

<sup>o</sup> Only 23cm x 17cm requires stitching. Indications for use available at i-CAT.com/ifu

**V8** i-CAT FLX V8  
8cm x 5cm to 8cm x 8cm

**V10** i-CAT FLX V10  
8cm x 5cm to 16cm x 10cm

**V17** i-CAT FLX V17  
8cm x 5cm to 23cm x 17cm

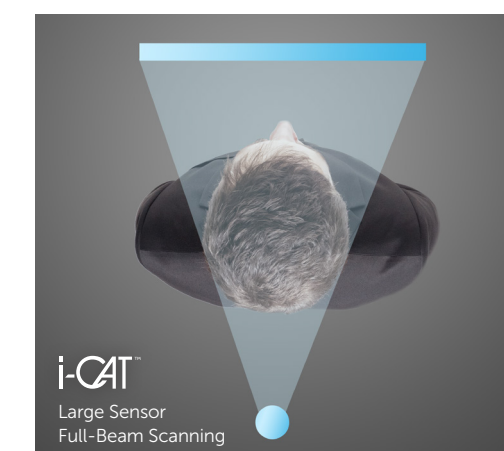
ENVISION A FUTURE OF FREEDOM

## ENVISION A FUTURE OF FREEDOM



### FULL 24.2CM X 19.3CM SENSOR

All i-CAT FLX V-Series models comes equipped with a full 24.2cm x 19.3cm sensor capable of yielding a full ceph height 3D scan (13cm x 16cm) in just 4.8 seconds. This allows owners the flexible freedom to upgrade their field-of-view without the need to replace the unit itself. The solution is simply an in-office software upgrade that opens the field-of-view to the next V-Series configuration.



i-CAT  
Large Sensor  
Full-Beam Scanning

### NO OFFSET SCANNING

With our PureScan™ technology and full-size sensor, i-CAT FLX V-Series scanners capture a 3D scan without compromising image quality. This full-beam scanning maximizes the use of the large sensor to provide more anatomical information at a higher quality compared to other smaller sensors.



Other 3D CBCT  
Smaller Sensor  
Half-Beam Scanning

Unlike the i-CAT FLX V-Series, some 3D CBCT imaging machines use a smaller sensor, which only capture half of the volume at a time requiring images to be stitched together. Offset or half-beam scanning allows a smaller sensor to shift and scan a slightly larger volume than its size, although the cost associated is the sacrifice of image quality and anatomical accuracy.

## GROW WITH YOUR VISION

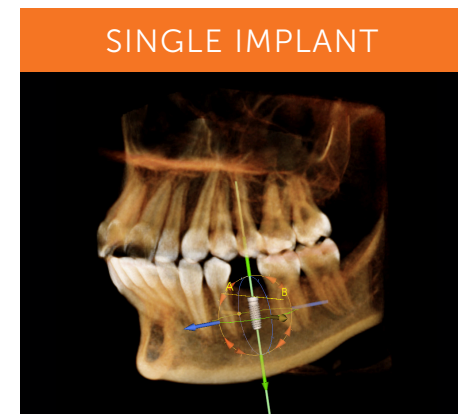
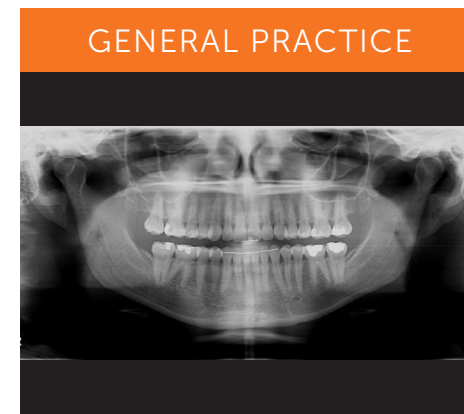
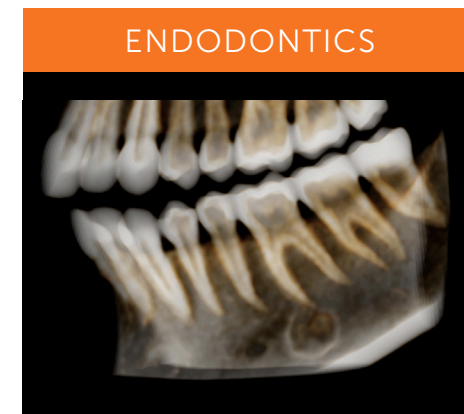
Creating a clear vision for your practice growth is an important part of becoming a successful clinician. The addition of technologies such as i-CAT 3D CBCT can open up options that you may have never considered so that you can better define your direction for growth.

Whether your needs involve imaging for implant placement, airway and TMD evaluations, oral surgery, or orthodontic treatment, i-CAT FLX technology and educational opportunities can help support you in meeting your objectives. And with the upgradeable V-Series, you have the freedom and flexibility to take charge of your professional future and bring your vision to life.

## YOUR FUTURE HAS FREEDOM WITH i-CAT FLX V8



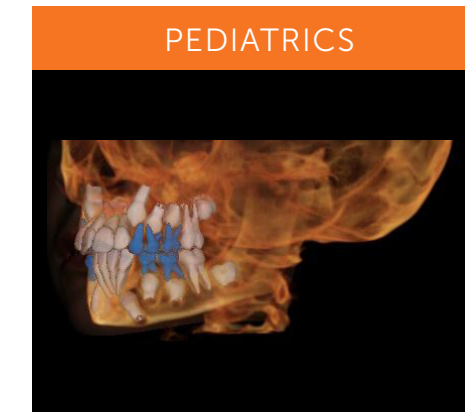
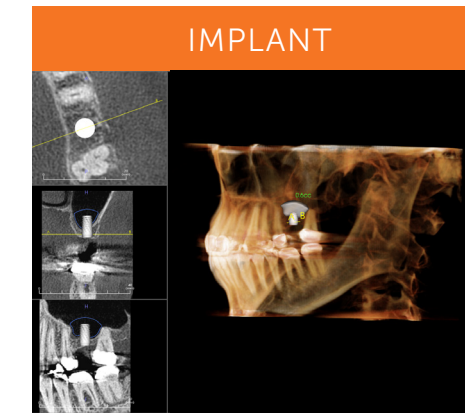
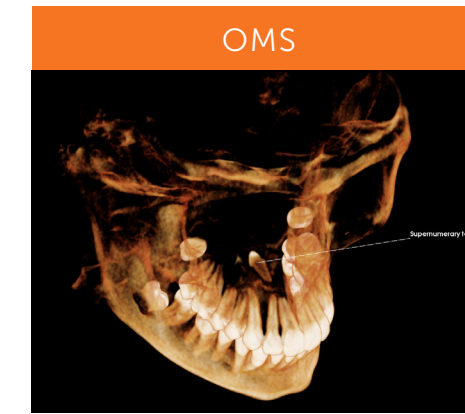
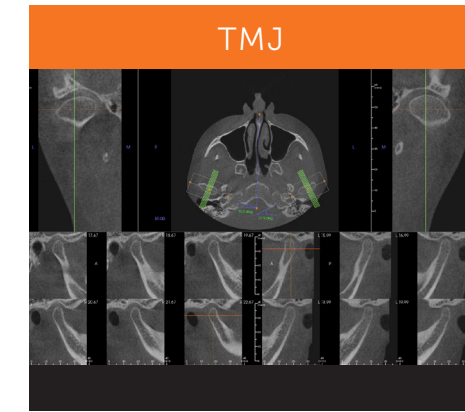
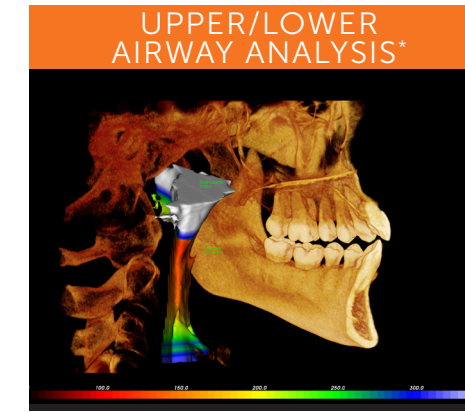
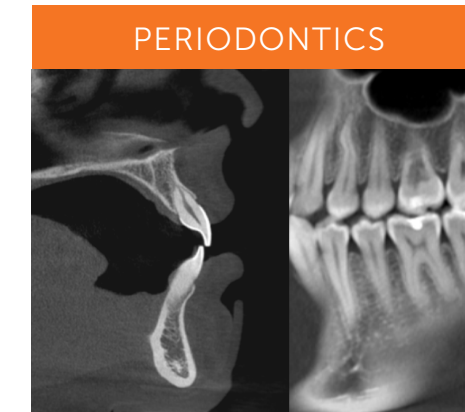
**V8** represents your gateway into the world of industry-leading 3D CBCT imaging at an affordable price. With 8cm x 5cm and 8cm x 8cm FOVs, clinicians are able to capture specific areas of the anatomy instead of the entire oral-maxillofacial complex which is not necessary for the procedure you routinely provide for your patients.



## BE A PERFECT 10 WITH i-CAT FLX V10



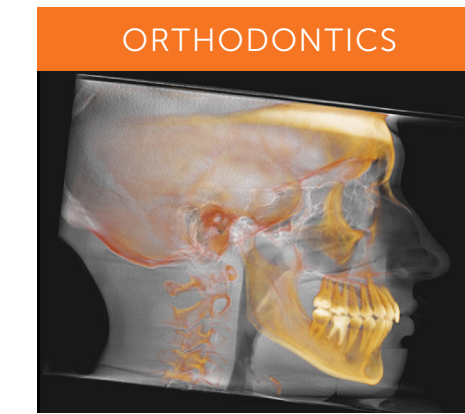
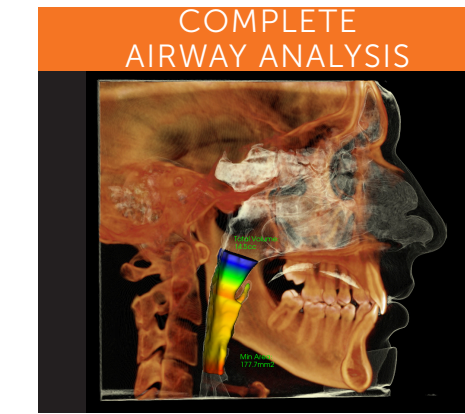
**V10** has all the functionality of the V8, such as clinical control and optimized patient care, powerful comprehensive treatment tools, and more advanced procedures with greater predictability. The difference between the V8 and V10 Series primarily relates to the available fields of view. V10 scan sizes range from an adjustable 8cm x 5cm to 16cm x 10cm.



## MORE FIELDS OF VIEW THAN ANY OTHER



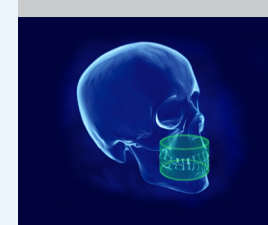
**V17** is designed to accommodate the widest range of clinical applications, the V17 is the most flexible of the V-Series options. The V17 has a maximum and scalable FOV of up to 23cm x 17cm. The V17 is used most often by orthodontists, oral maxillofacial surgeons and oral radiologists; however, this system is appropriate for any dentist who wishes to view the entire oral-facial complex.



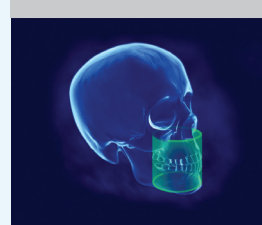
THE FIRST LINE OF **UPGRADEABLE DEDICATED 3D CBCT MACHINES** FROM THE AWARD-WINNING **i-CAT BRAND**



FOV 8cm x 5cm

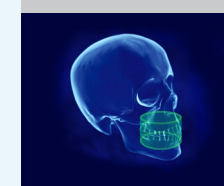


FOV 8cm x 8cm

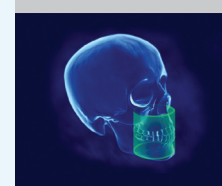


Upgrade to the V10 or V17 field-of-view with an easy in-office software update.

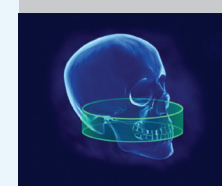
FOV 8cm x 5cm



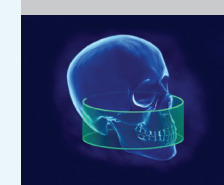
FOV 8cm x 8cm



FOV 16cm x 4cm



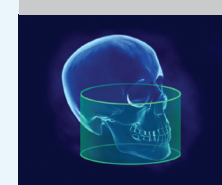
FOV 16cm x 6cm



FOV 16cm x 8cm

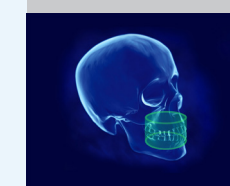


FOV 16cm x 10cm

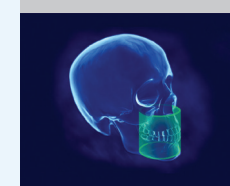


Upgrade to the V17 field-of-view with an easy in-office software update.

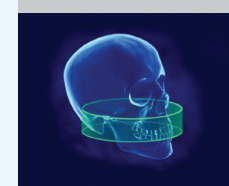
FOV 8cm x 5cm



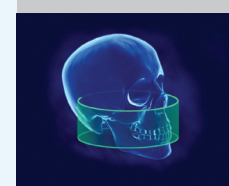
FOV 8cm x 8cm



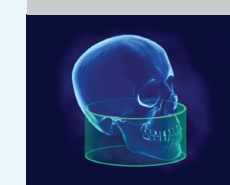
FOV 16cm x 4cm



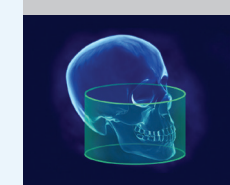
FOV 16cm x 6cm



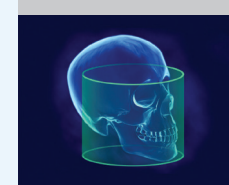
FOV 16cm x 8cm



FOV 16cm x 10cm



FOV 16cm x 13cm



FOV 23cm x 17cm



Largest range of field-of-view.

\*You can use i-CAT scans in software such as Tx STUDIO to review the 3D data and reveal compromised airways.