

BEYOND 2D, DEPTH ADDED PANORAMA

 **PaX-i** INSIGHT



INSIGHT PAN

- The Next Evolutionary Step Forward in Panoramic Imaging With Insight Pan

RAPID CEPH

- 1.9 second acquisition time produces superb image quality
- Reduced motion artifacts and faster workflow

USER-FRIENDLY EZDENT-I SOFTWARE

- Powerful diagnostic value with Insight Feature
- Complete solution for consultation
- Easy to learn, easy to use

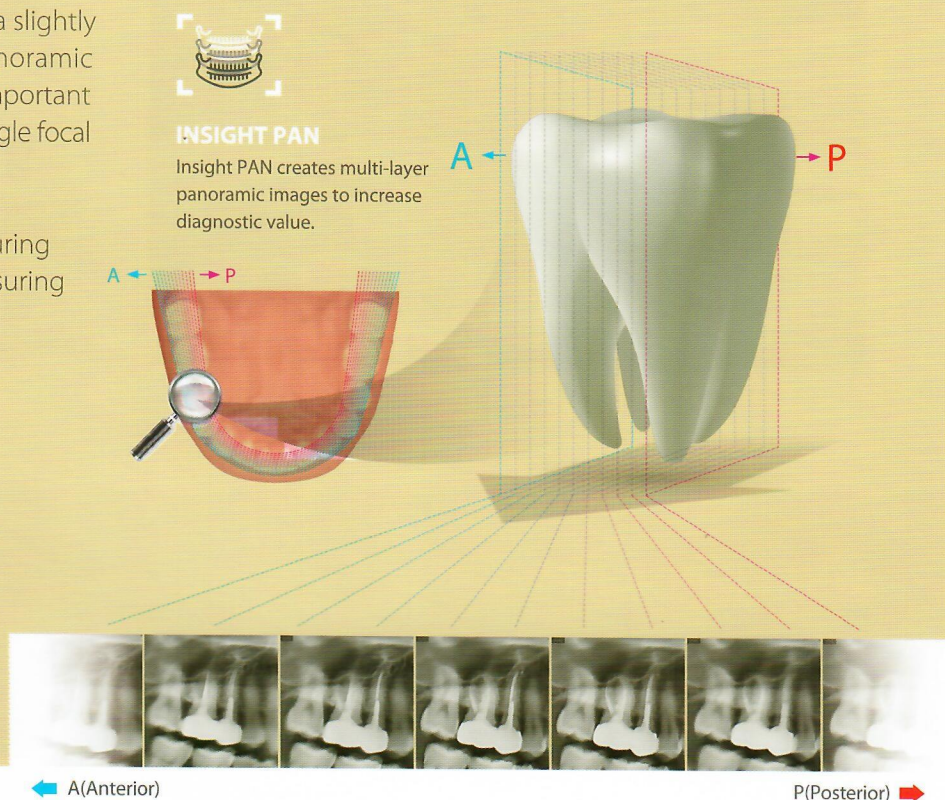
ADVANCED IMAGE SOLUTION WITH INSIGHT PAN

The Next Evolutionary Step Forward in Panoramic Imaging.

The PaX-i Insight is capable of taking a multi-layered panoramic image called an Insight Pan which provides a unique, in-depth look across a single focal trough.

Because each patient may have a slightly different arch, conventional panoramic images may occasionally miss important details which land outside of a single focal layer.

Insight Pans are capable of capturing multiple-layered Insight pans, insuring that all details are captured in a depth-added panoramic image.



MINIMIZE MOTION ARTIFACTS WITH RAPID CEPH TECHNOLOGY

The next step in cephalometric technology, Vatech's new Rapid Ceph minimizes motion artifacts and enables faster diagnostic work flow while providing the the highest quality digital image.

GREAT CLINICAL CARE WITH RAPID CEPH TECHNOLOGY

